

ADD A PASKEY TO YOUR EU LOGIN ACCOUNT

This guide will only work for you if you already have a well-functioning EU Login (relying on a verification method other than SMS) but want to enable the easy solution of a Paskey.

If you did not already activate an alternative method to the SMS verification, please refer to our special guide for migration after 1 July 2025.

A **Paskey** is suitable only for **mobile devices** (smartphone, iPad). For laptops or desktops, the activation of a **Trusted Platform (TPM)** is recommended.

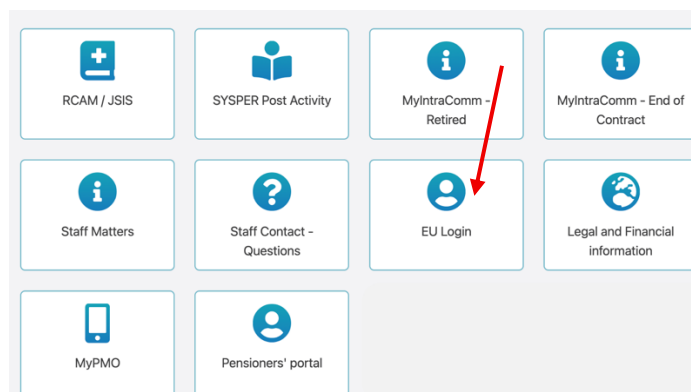
iPad/iPhone: Make sure that **AutoFill Passwords and Paskeys** and **iCloud Keychain /Passwords** (and any preferred browser/password manager) are enabled in the System Settings of your device. *This step is not necessary on Android devices.*

1. INITIAL CONFIGURATION

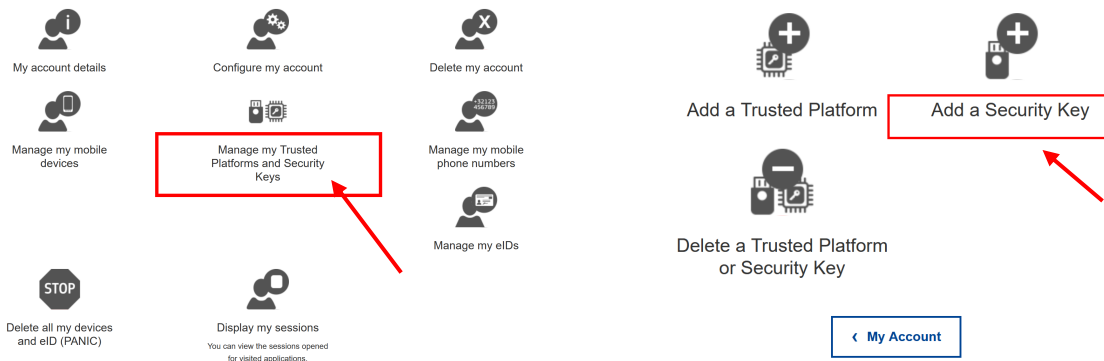
Launch <https://myremote.ec.europa.eu/>. Enter your email address and your EU Login password on request. Update your EU Login password if required (*if you forgot it, click on [Lost your password?](#) to reset it. It must contain **at least 10 characters**, including lower- and upper-case letters, numbers and special characters (-, ?, &, % ...).* **Tip:** start it with the current **year and month**, followed by your preferred (permanent) password, such as **25-08Ukraine** (if created in August 2025).

2. Next, check that your **verification method** is set at a method you activated previously (**not SMS or Password!**). If required, click on the arrow in the black box to find it in the drop-down menu. Click on it and then click "**Sign in**".

3. After authenticating using your existing verification method, you will now see the Welcome Screen of MyRemote. Click on "**EU Login**".



4. Click on "**Manage my Trusted Platforms and Security Keys**" and next, on **Add a Security Key**.



5. Give your device a name (**iPad**, **S24** ..) and click **Submit**.

6. The following procedure may vary slightly from one device to another.

- If you are logging in from a **mobile device**: When asked where you want to store the Passkey, choose **“This device”** and click **“Next”**. Now authenticate using your usual screen lock (biometric, code or pattern (*Android*))
- If you are logging in from a **computer**: Make sure that bluetooth is enabled on both your computer and mobile device (devices do not need to be paired, but should be close to one another)
 - choose **“iPhone, iPad or Android device”** for your Passkey. *On Android devices you should now tick the option to “Remember this connection” in order to skip the QR stage when you next log in using the same two devices. This option is not available for Apple.*
 Then click **Next**
 - a QR code is now generated on the computer. Scan it with the camera in your mobile device and click on the link which appears on that device (*Apple*: at the top, *Android*: below the photo), and then (*Android*) on **Connect devices** and **Continue** to create a Passkey. Authenticate using your usual screen lock (biometric, code or *Android* pattern).

7. You will first receive a message that a Passkey was saved. When you receive a pop-up message that *“ecas.ec.europa.eu is requesting extended information”*, click **“Allow”**. You will then receive a message that a Passkey was finally linked to your EU Login account.

8. USE WITH EU LOGIN

Launch for example <https://mypmo.europa.eu/>

- **if you want to log on and authenticate on the same mobile device**, enter your email and password if prompted and select **Trusted Platform or Security Key** as your verification method. Authenticate using your usual screen lock (biometric, code or pattern) and you are in.
- **if you want to authenticate with your mobile device when logging in on another device** (such as a computer):

Make sure that bluetooth is activated as described in point 6 above. Enter your email and password if prompted and select **Trusted Platform or Security Key** as your verification method. If you have activated several devices, you will be asked to select the one you want to use for authentication. Click **Next**.

- **On iPads/iPhones**: scan the QR code and click on the link which appears, as described under point 6 above. Authenticate using your usual screen lock (usually biometric).
- **On Android**: Choose **iPhone, iPad or Android device** and click "**Next**". Authenticate using your usual screen lock (biometry, code or pattern)

9. EU LOGIN PASSWORD

By enabling a Passkey, you authorise Windows/Apple to administer your access codes and passwords. Whenever your EU Login password needs updating (every 6 months), you will need to make sure that it is updated at the same time in your passwords folder/keychain under **Settings** in your device.